

Japan's Leading Exhibition Specialised in Smart Intralogistics Technologies!

SMART LOGISTICS Expo

Nagoya Show

5th SMART LOGISTICS Expo NAGOYA

Dates: **October 29(Wed) – 31(Fri), 2025**

Venue: **Port Messe Nagoya, Japan**

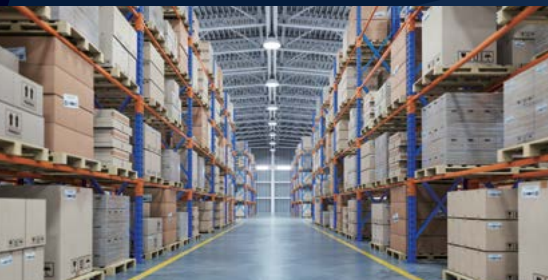
Tokyo Show

5th SMART LOGISTICS Expo

Dates: **January 21(Wed) – 23(Fri), 2026**

Venue: **Tokyo Big Sight, Japan**

Organised by: **RX Japan Ltd.**



INDEX

➤ Click below and jump to the page

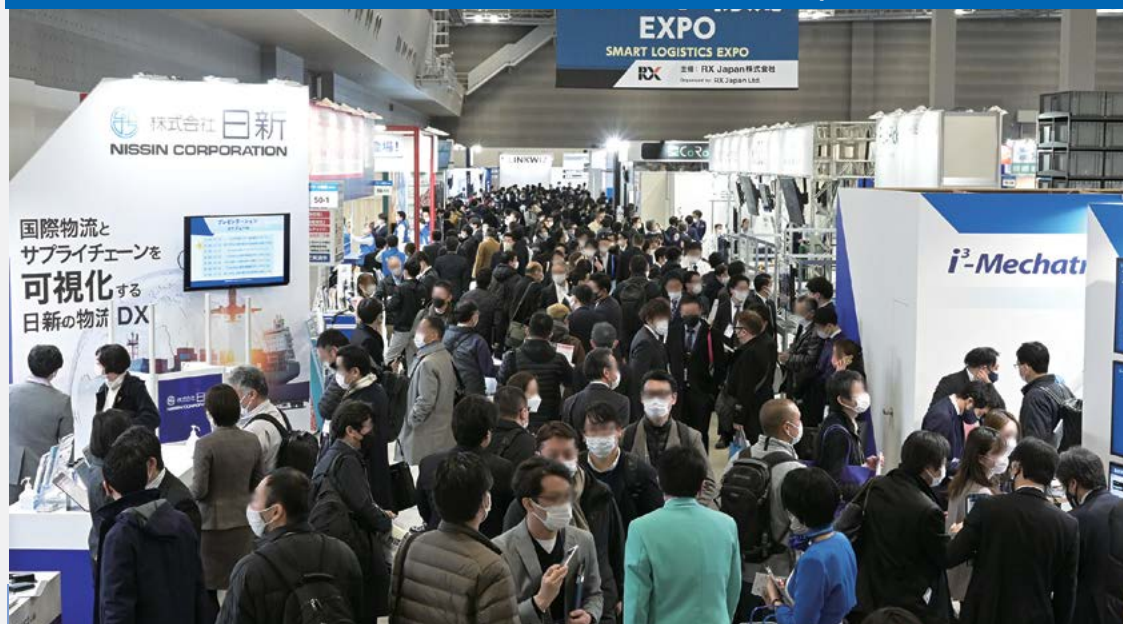
➤ <u>Scenes from Previous Shows</u>	P3
➤ <u>Show Outline</u>	P4
➤ <u>About Exhibitors</u>	P5
➤ <u>About Visitors</u>	P6
➤ <u>Concurrent Conference</u>	P7
➤ <u>Details for Nagoya and Tokyo Shows</u>	P8
➤ <u>Schedule until the Show</u>	P9
➤ <u>How to Join as an Exhibitor</u>	P10

SMART LOGISTICS Expo is held in Nagoya & Tokyo!

Scenes from Previous SMART LOGISTICS Expo Nagoya



Scenes from Previous SMART LOGISTICS Expo



B2B Exhibition for Logistics Industry

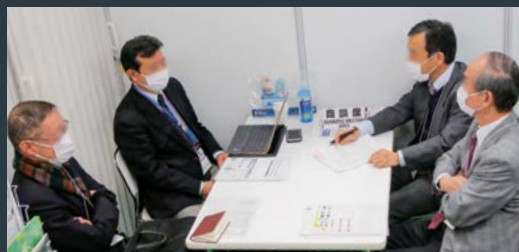
Exhibitors

Companies who deal in the following products/solutions for logistics:

- Smart Logistics Technologies
 - Smart Warehousing Technologies
 - IoT System/
Software for Logistics
(WMS, Digital Picking System, etc.)
 - Autonomous Driving Technology
 - Material Handling Technology
(AGVs, Unmanned Forklifts,
Sorters, etc.)
 - Robots
 - 3PL/4PL LLP
- etc.

BUSINESS MEETINGS

- ◆ New Product/
Technology Introduction
- ◆ Technical Consultation
- ◆ New Partnership
Arrangement
- ◆ Price / Delivery Date
Arrangement



Visitors

Those in charge of Logistics/
Warehousing from the following companies:

- Electric/
Electronics Device Mfr.
 - Automobile, Automotive
Components Mfr.
 - Food, Drugs, Cosmetics Mfr.
 - Logistics Company
 - Warehousing Company
 - Distribution Company
 - 3PL/4PL LLP
 - Public Office, Autonomy
- etc.

Leading Companies will Exhibit

◆ Leading Companies Exhibited

< List of exhibitors in previous shows (excerpted)* >

- | | | |
|--|---|--|
| <ul style="list-style-type: none"> • ADLINK • ADSTEC • ADVANTECH • AIDEMY • ATEN JAPAN • B&R • BALLUFF • BASIC JAPAN • BOSSARD • CANON MARKETING JAPAN • CARBON • CASIO COMPUTER • DAIFUKU • DENSO WAVE • DOOG • DOOSAN ROBOTICS • DYNABOOK • ELECOM • ENSSEL • EPSON SALES JAPAN • FANUC • FESTO • FPT JAPAN HOLDINGS • FRAUNHOFER-GESELLSCHAFT • FUJI MACHINERY • FUJI SOFT • GEEK+ • GENETEC • GLOBAL CONNECT • GROUND • HITACHI SOLUTIONS EAST JAPAN • HIWIN | <ul style="list-style-type: none"> • IFM EFECTOR • IHI LOGISTICS & MACHINERY • IRISU • ITOH DENKI • JUKI • K.MECS • KAWADA ROBOTICS • KAWASAKI HEAVY INDUSTRIES • KEYENCE • KOH YOUNG TECHNOLOGY • KONICA MINOLTA • KUKA JAPAN • KYOCERA • LEADER HARMONIOUS DRIVE SYSTEM • LINKWIZ • LINX • LITMUS AUTOMATION JAPAN • MACNICA • MAGENTA ROBOTICS • MITSUBISHI ELECTRIC • NEC COMMUNICATION SYSTEMS • NIKON • NIPPON TELEGRAPH AND TELEPHONE EAST • NTT DOCOMO • OKAYA ELECTRONICS • OMRON • PANASONIC • PROMANAGE • PTC JAPAN | <ul style="list-style-type: none"> • RICOH JAPAN • SCHMALZ • SCHNEIDER ELECTRIC • SCHUNK • SIEMENS • SILEX TECHNOLOGY • SOLIDWORKS • SOLOMON TECHNOLOGY • SUMITOMO HEAVY INDUSTRIES • SUPREME SYSTEM • SYRIUS JAPAN • TECHMAN ROBOT • TECNOS JAPAN • TERADYNE • THE QT COMPANY • THK • TOSHIBA TEC • TOYOTA INDUSTRIES • TREND MICRO • TUENKERS • TYCO ELECTRONICS • UHURU • UNIVERSAL ROBOTS • UT TECHNOLOGY • WINGARC 1ST • WOLF SSL • YAMAHA • YAMAHA MOTOR • YASKAWA ELECTRIC |
|--|---|--|

etc.

◆ Exhibitors from 25* countries/regions

< Exhibiting countries/regions in previous shows >

- | | | | |
|---|--|--|--|
| <ul style="list-style-type: none"> • Japan • Australia • Austria • Belgium • Canada • China | <ul style="list-style-type: none"> • Czech Republic • Finland • France • Germany • Hong Kong • Hungary | <ul style="list-style-type: none"> • India • Israel • Italy • Korea • Mexico • Singapore • Sweden | <ul style="list-style-type: none"> • Switzerland • Taiwan • Thailand • Turkey • UK • USA |
|---|--|--|--|

Demonstrations Foster Business Discussions



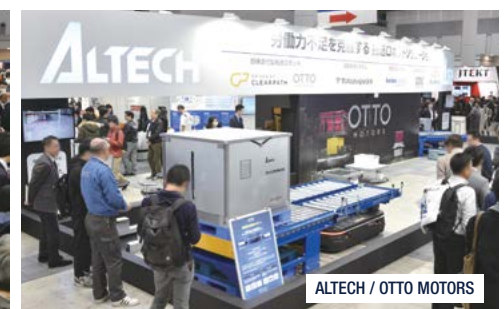
OKAMURA / AUTOSTORE



ITO DENKI



GEEK+ / KYOEI



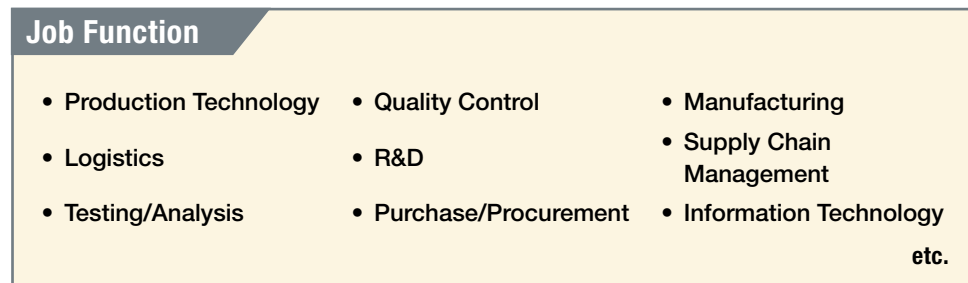
ALTECH / OTTO MOTORS

*including concurrent shows

See here for full list of exhibitors in 2025 Tokyo Show

33,000 Visitors in Nagoya & 92,000 Visitors in Tokyo will Visit

< Visitor profile >



< List of visitors in previous shows (excerpted) >

Japanese Companies

- AISIN
- ALPS ALPINE
- CANON
- CASIO
- CITIZEN
- CLARION
- DAIWA HOUSE INDUSTRY
- DENSO
- DENSO TEN
- EAST JAPAN RAILWAY COMPANY
- FANUC
- FUJI FILM
- FUJITSU
- FUKUYAMA TRANSPORTING
- HITACHI
- HITACHI AUTOMOTIVE SYSTEMS
- HITACHI TRANSPORT SYSTEMS
- HONDA R&D
- JAPAN AIRLINES
- JAPAN POST
- JDI
- JTEKT
- KAWASAKI HEAVY INDUSTRIES
- KEIHIN
- KINTETSU WORLD EXPRESS
- KOITO MFG.
- KOMATSU
- KONICA MINOLTA
- KONOIKE TRANSPORT
- KUBOTA
- KYOCERA
- MAZDA MOTOR
- MEGACHIPS
- MITSUBISHI ELECTRIC
- MITSUBISHI LOGISTICS
- MITSUI-SOKO
- MURATA MFG.
- NEC
- NICHIA
- NIDEC
- NIKON

- NIPPON EXPRESS
- NIHON KOHDEN
- NISSAN MOTOR
- OLYMPUS
- OMRON
- PANASONIC
- PIONEER
- RENESAS ELECTRONICS
- RICOH
- ROHM
- SAGAWA EXPRESS
- SEIKO EPSON
- SEINO TRANSPORTATION
- SHARP
- SONY
- STANLEY ELECTRIC
- SUMITOMO HEAVY INDUSTRIES
- SUMITOMO WAREHOUSE
- SUZUKI MOTOR
- SUZUYO & CO
- SYSMEX
- TAIYO YUDEN
- TDK
- TERUMO
- TOKAI RIKI
- TOSHIBA
- TOYOTA MOTOR
- YAMAHA MOTOR
- YAMATO TRANSPORT
- YASKAWA ELECTRIC

Overseas Companies

- AMAZON
- AMD
- AMKOR TECHNOLOGY
- APPLE
- ASE
- ASUSTEK COMPUTER
- AUDI
- BMW
- BOE
- BOSCH
- BYD
- COMPAL ELECTRONICS
- CONTINENTAL AUTOMOTIVE

- DAIMLER
- DELTA ELECTRONICS
- EPISTER
- EVERLIGHT
- FAIRCHILD SEMICONDUCTOR
- FORD MOTOR
- FOXCONN
- GE
- GENERAL MOTORS
- GOOGLE
- HAIER
- HISENSE
- HUAWEI TECHNOLOGIES
- HYUNDAI
- INFINEON TECHNOLOGIES JAPAN
- INTEL
- KONKA
- LENOVO
- LG DISPLAY
- LG ELECTRONICS
- MEDIATEK
- MIDEA GROUP
- NVIDIA
- PEGATRON
- PLEXUS
- QUALCOMM
- QUANTA COMPUTER
- RENAULT
- SAMSUNG DISPLAY
- SAMSUNG ELECTRONICS TECHNOLOGY
- SIEMENS
- SK HYNIX
- SMIC
- SPIL
- STMICROELECTRONICS
- TCL
- TSMC
- VALEO
- VOLKSWAGEN
- VOLVO

etc.

Numbers of visitors are forecasts including concurrent shows.

Industry Leaders Speak at Conference

High-quality content, addressed by industry leaders, attracts huge attention & visitors.

< List of speakers from past shows (excerpts) >



Atsushi Tempaku
Executive Officer, Regional
General Manager, Chubu
Region, General Manager
Nagoya Branch,
Nippon Express Co., Ltd.



Norihiko Nakabayashi
Chief Data Officer,
**Yamato Transport
Co., Ltd.**



Satoshi Takahashi
Director,
**Sagawa Express
Co., Ltd.**



Shuji Kawai
Operating Officer, Last One
Mile Planning Team,
Seino Holdings Co., Ltd.



Kiyoshi Nagao
Vice President and Executive Officer,
Business Management Headquarters,
Hitachi Transport System, Ltd.



Mitsuru Katsumata
General Manager, Integrated
Operations Management Div.,
**Nichirei Logistics
Group Inc.**



Takeshi Inoue
Director, Logistics
Solutions Dept.,
**Sapporo Group
Logistics Corp.**



Jun Yoshizawa
Managing Director, Railway
Business Headquarters,
**Japan Freight
Railway Co.**



Kentaro Ryu
General Manager, RoboLife Div.,
ZMP Inc.



Yuriko Hanazaki
Senior Manager, Project
Management + Performance
Analytics, Supply Chain
Deliver Japan,
Johnson & Johnson K.K.



Kenichi Katae
General Manager, AR Project,
R&D Center, TOYOTA Material
Handling Company,
TOYOTA INDUSTRIES Corp.



Akinori Okazaki
President & CEO,
DENSO LOGITEM Corp.



Honorifics omitted. In random order. Speakers' affiliations and positions are those at the time of the conference. Affiliations and positions may be omitted due to the space limit.

Characteristics of the show in Nagoya and Tokyo

Nagoya/October Show

Dates : October 29(Wed) –31(Fri), 2025
Venue : Port Messe Nagoya, Japan

◆ Why Nagoya?

Your Business Platform in Central & Western Japan

- 88.3% of Japanese visitors are from Central & Western Japan
- World's leading companies like **TOYOTA** and **DENSO** are based in Nagoya region
- The region, where numbers of Japanese manufacturing companies are concentrated

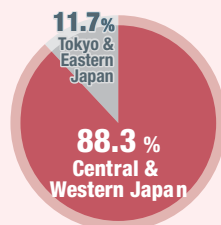
◆ Number of visitors: 33,000 visitors in 2025

• Concurrent Shows:

- 8th AUTOMOTIVE WORLD (Nagoya)
- 8th NEPCON JAPAN (Nagoya)
- 8th SMART FACTORY Expo (Nagoya)
- 8th RoboDEX (Nagoya)
- 4th GREEN FACTORY Expo (Nagoya)
- 2nd Manufacturing Industry's HR Expo

Most Domestic Visitors are from Central & Western Japan

Japanese Visitor Breakdown of previous NAGOYA by Region



Tokyo/January Show

Dates : January 21(Wed) –23(Fri), 2026
Venue : Tokyo Big Sight, Japan

◆ Why Tokyo?

A Large Scale Exhibition in Japan & Asia's Business Hub - Tokyo

- 76.2% of Japanese visitors are from Tokyo and Eastern Japan
- Global Business Hub in Japan & Asia
- Perfect Timing for New Business
- January is when many companies plan budgets and select new suppliers—ideal for generating quality leads.

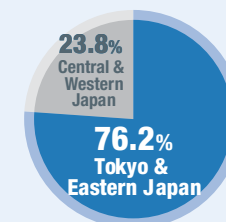
◆ Number of visitors: 92,000 visitors in 2026

• Concurrent Shows:

- 18th AUTOMOTIVE WORLD
- 40th NEPCON JAPAN
- 10th Smart Factory Expo
- 10th RoboDEX
- 4th Green Factory Expo
- 1st Manufacturing Industry's HR Expo

Most Domestic Visitors are from Tokyo & Eastern Japan

Japanese Visitor Breakdown of TOKYO by Region



SMART LOGISTICS Expo will have:

Nagoya in 2025

600 Exhibitors

33,000 Visitors

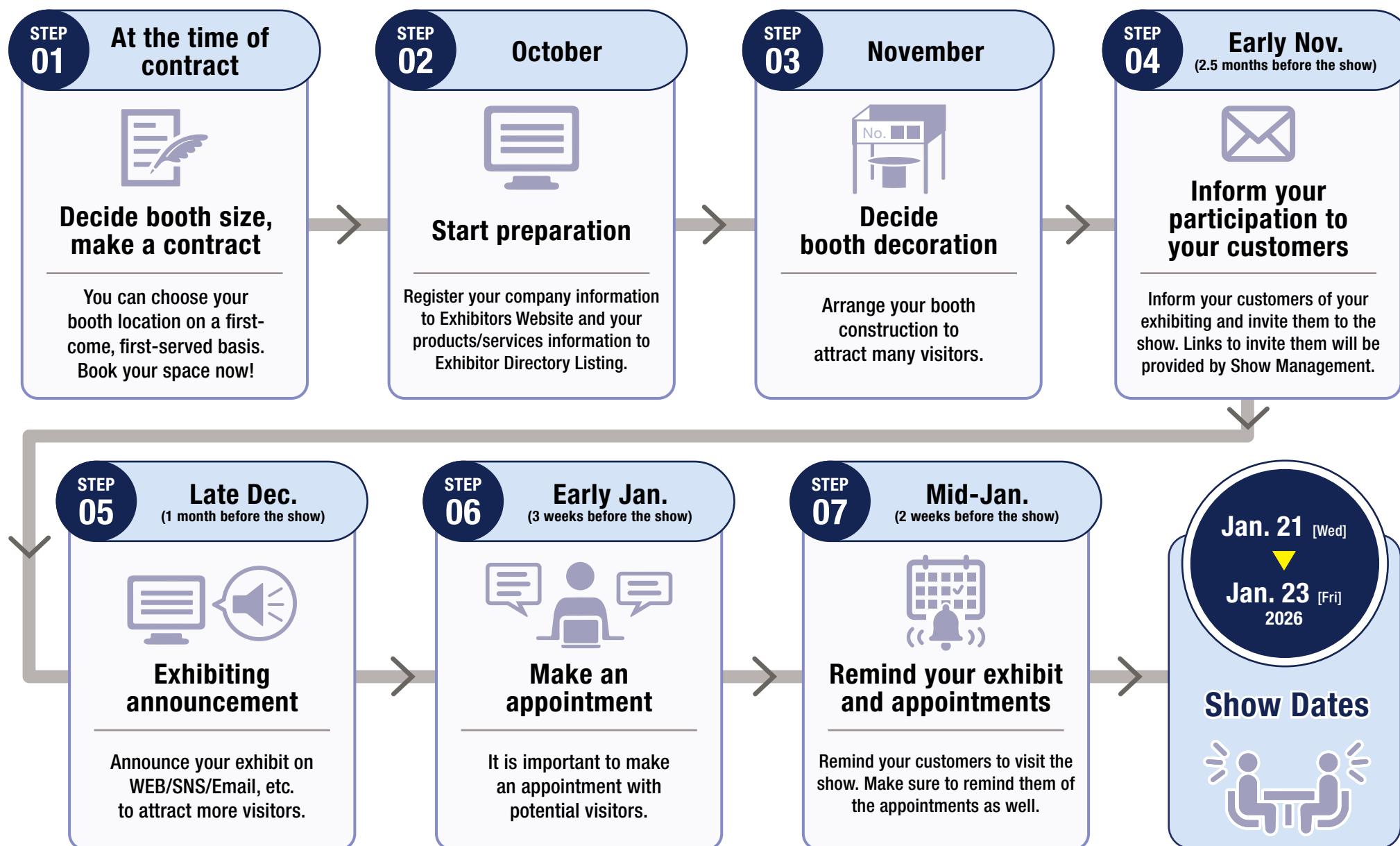
Tokyo in 2026

1,850 Exhibitors

92,000 Visitors

Numbers of exhibitors and visitors are forecasts including the concurrent shows.

Schedule until the Show <Sample of Jan. Show Showcase>



How to Join as an Exhibitor

- 1** Please **contact Show Management** with your product information and your preferable exhibit space size.
- 2** Show Management will **offer available spaces** in the most suitable exhibit area for your products.
- 3** Please **choose your preferable location** and submit the space contract form.

Please see below for the cost information and the advertisement opportunities.



Participation Cost



Advertisement Opportunities



Contract



**If you have any questions,
please feel free to contact us.**

► Contact

Organiser: RX Japan Ltd.

SMART LOGISTICS Expo Show Management

11F Tokyo Midtown Yaesu, 2-2-1 Yaesu, Chuo-ku, Tokyo 104-0028, Japan

TEL: +81-3-6739-4102

E-mail: logistics-expo.jp@rxglobal.com

Web: www.smart-logistic.jp/hub/en-gb.html

A division of Reed Business Registered in England, Number 678540